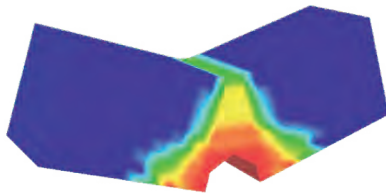


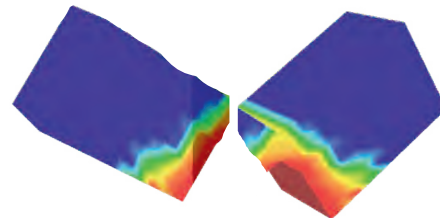
Charpy Impact Strength Test (EN ISO 179)

DEFINITION

Charpy V-notch test, is a standardized high strain-rate test which determines the amount of energy absorbed by uPVC during fracture.

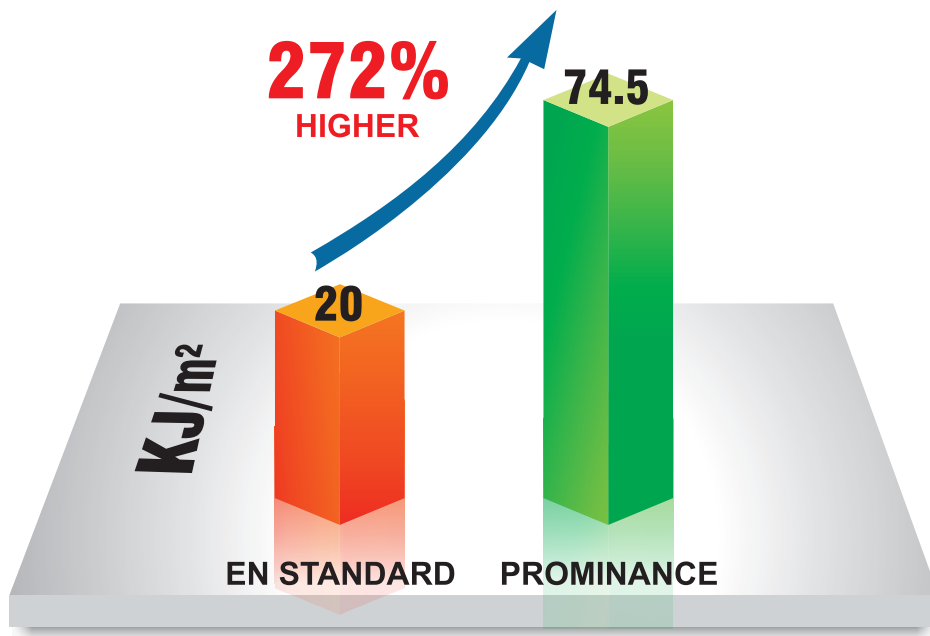


DUCTILE FRACTURE



BRITTLE FRACTURE

EN Standards vs Prominance



Ductile Fracture: Type of Fracture characterized by extensive deformation of plastic or “necking” resulted by finest grades of raw material used for extruding window Profiles.

Brittle Fracture: Type of Fracture characterized by rapid crack propagation with low energy release and without significant plastic deformation resulted by inferior or coarse grades of raw materials.

CONSEQUENCES

Poor impact strength results to brittle failure.